

**(EX
PRO)**
SYSTEM



AIRCLAD (X)

XPO COLLECTION

Redefining the future of events

AirClad X is our brand of event, retail and leisure products with high performance design at its core.

Established in 2007, over the years AirClad X has worked extensively with premium brands and clients to produce one-off, custom designs. As a result of this experience, we have developed our own range of industry-leading products to suit a multitude of applications.

These structures are crafted to engage and inspire people, and to ultimately bring your space to life.

To assist in the installation and delivery of our structures globally, there is a developing network of partners managing deployments from location to location.



Structure: XPO 10
Location: London
Client: Sony

Structure: XPO 10
Location: Goodwood FOS
Client: Lotus



Event Architecture

02

04

06

13

16

43

44

Structure: XPO 6
Location: Manchester
Client: Apple



WHY THE EXPRO SYSTEM

What does it do for you?

The EXPRO system can be creatively configured to develop a huge range of fully branded event spaces.

With extensive options for customisation, the AirClad XPO can reflect any brand guides to suit a multitude of marketing applications.

The frames offer the flexibility to be colour coded to match a brand's colour scheme, or for more temporary events can be vinyl wrapped to create a new look.

Using black AirCells is a great way to step away from the connotations of traditional frame marquees and our standard-issue fascia can be recessed to create a dynamic entrance or terrace.

The system is light for its size and easy to manoeuvre by hand, making this an ideal structure to use in locations with challenging operating conditions. With no heavy lifting equipment required, the XPO6 will pop up with minimal interference to the surrounding environment - wherever you choose to use it.

WHY?



**Build.
Show.
Repeat.**

WHY?

(x)

ABOUT THE EXPRO SYSTEM

What is XPO?

The XPO is our most popular product offering single height, premium event space. The system is comprised of a structural space frame and floor, wrapped in our pattern-cut AirCells to create uniquely strong monocoque structures.

As the XPO evolved, we designed solutions to negate the need for nuts and bolts, speeding up build times and creating clean, modern, contemporary spaces to build your event with.

We believe the XPO fills a gap in the market for high-end, quality, temporary structures with an architectural look and feel, far removed from any traditional marquee.

The XPO is our most popular commercial exposition system, designed for branded events and retail, delivering scale and modularity anywhere your event needs to be.



Structure: XPO 10
Location: European Tour
Client: BMW

WHAT?



ENGAGING

The unique design of the XPO naturally attracts attention. Its bold, minimalist form - a result of its functional engineering - commands any space it occupies.

INSPIRING

XPO challenges convention. The design motivates and delivers excitement through a unique ability to adapt its look and take on any personality.



PREMIUM

Precision and quality are the driving forces behind our passion for innovation as we continue to explore what's possible. Our desire to deliver premium products is at the heart of everything we do.



KNOW NO BOUNDARIES

The XPO is designed and engineered to be deployed in almost any location, on a wide range of ground types.

INVESTMENT OPPORTUNITIES

We have flexible solutions to meet your requirements. We offer packages from seasonal rentals to longer term leasing that allow you to experience AirClad products prior to purchase.



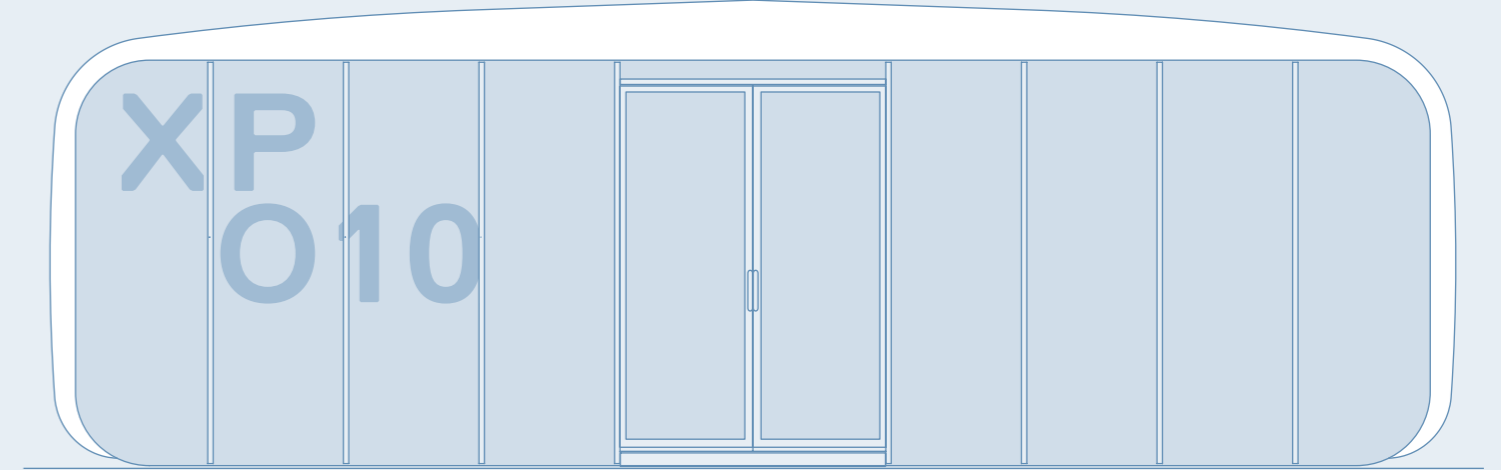
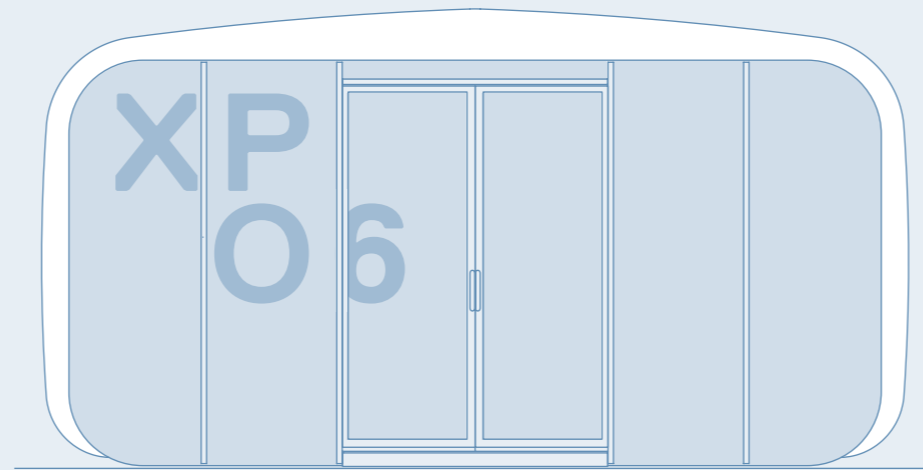
HIGH PERFORMANCE

No matter the duration of your event, the XPO is designed for both temporary and permanent. Engineered to perform in a range of environments.

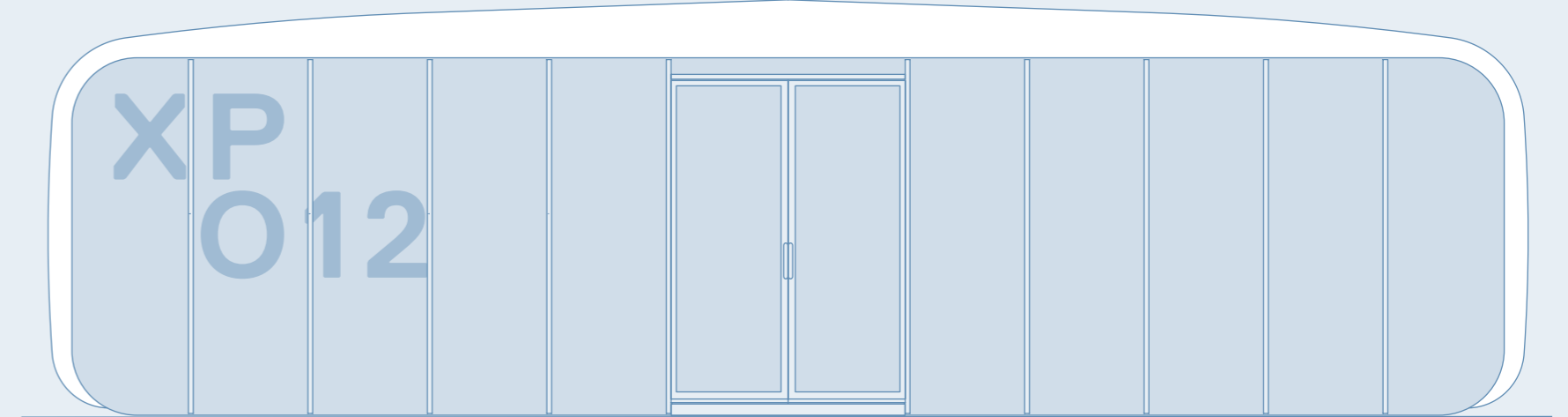
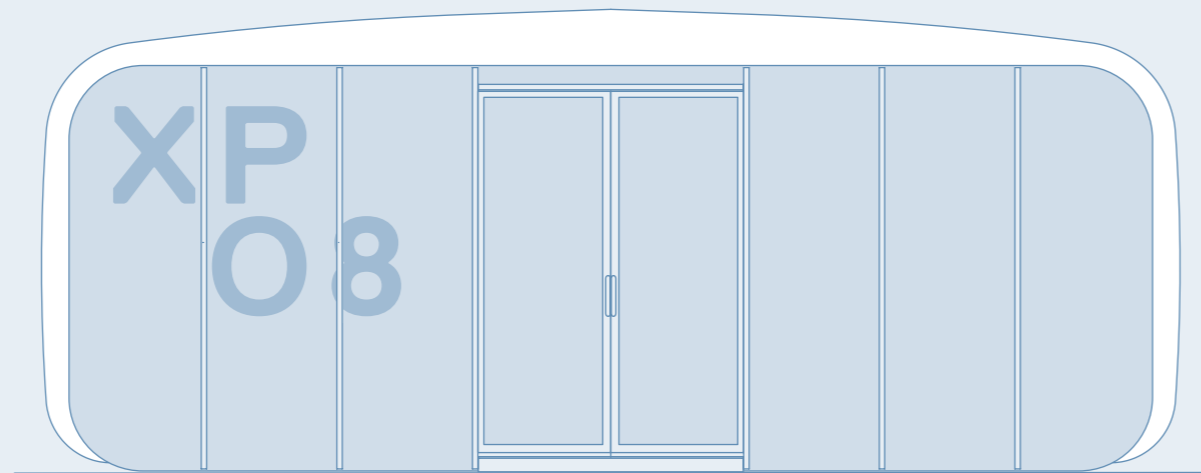
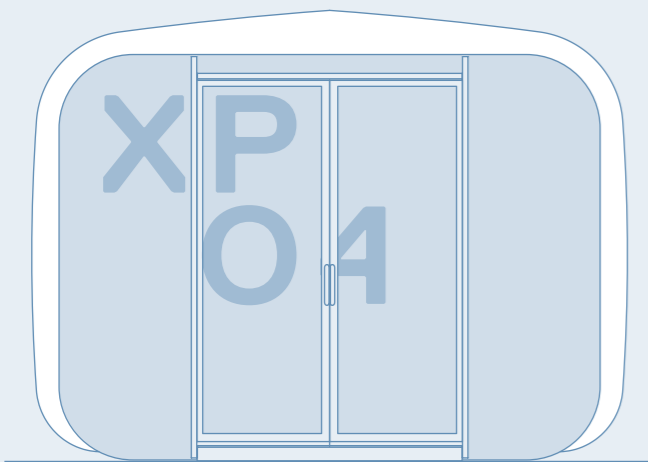
WHAT?

How much space do you need?

CORE



CUSTOM



WHAT?

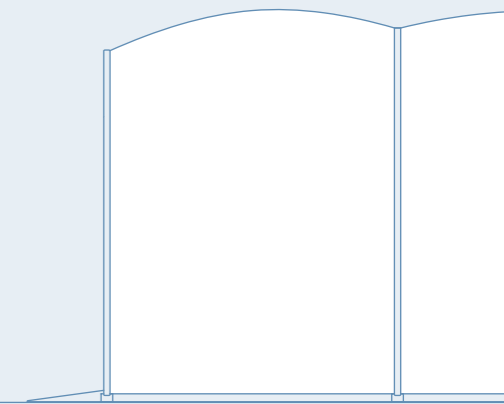
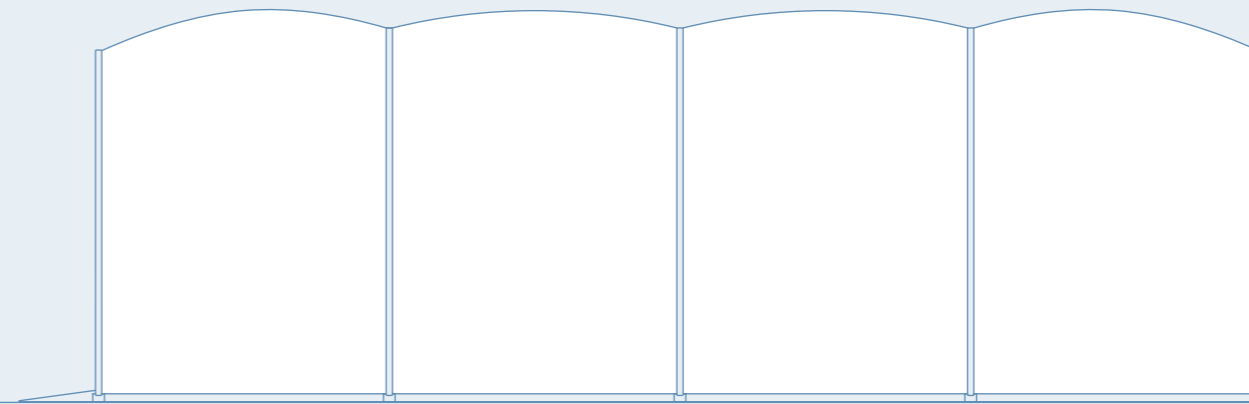
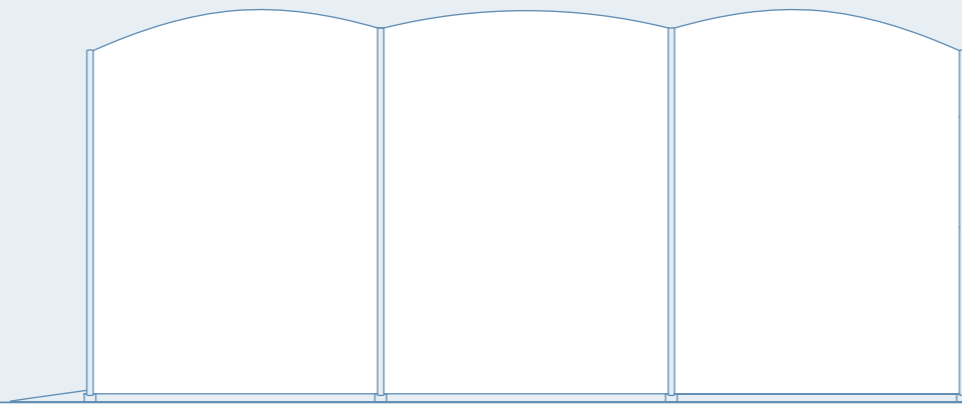
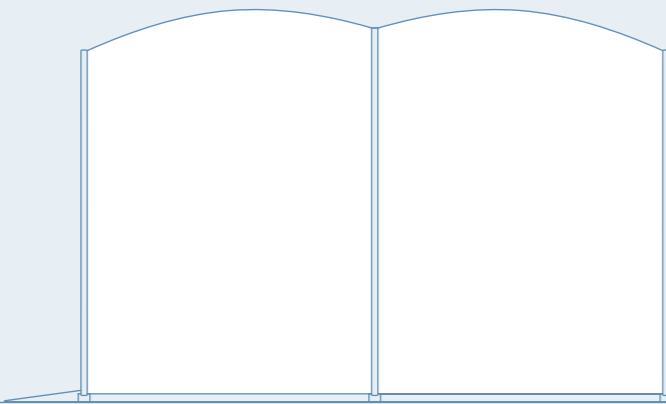
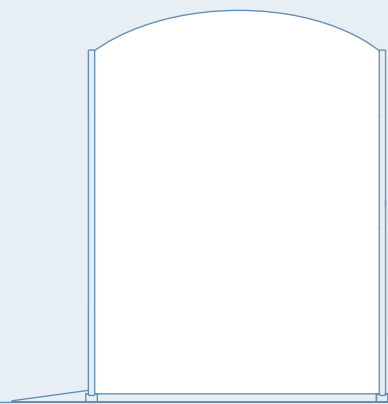


WHAT?

Truly modular event architecture

(x)

Extend your structure by 2.5m with additional bays



BROADEN YOUR EVENT HORIZON



WHAT?

OUR USP

Unique Features

AirClad X is a modular, mobile event system for global brands to get closer to their customers. Designed and engineered to grow as big as your brands ambition.

The EXPRO system consists of an aluminium structural frame wrapped in pneumatic AirCells that 'clad' the building and create its unique engineering properties. The AirCells inflate to create structural tension forming a unique, rigid, yet light-weight structure which rarely requires ballast.

EXPRO has edited out all unnecessary nuts and bolts, in favour of a click and play system, speeding-up build times and offering a clean modern contemporary space to build your event from. With raised flooring and flush mounted glazed fascias, the structures are designed to feel architectural from the ground up.

This system has been developed to fill a gap in the market, identifying a need for premium, quality, temporary structures.

Structure: XPO 4
Location: London
Client: On Running



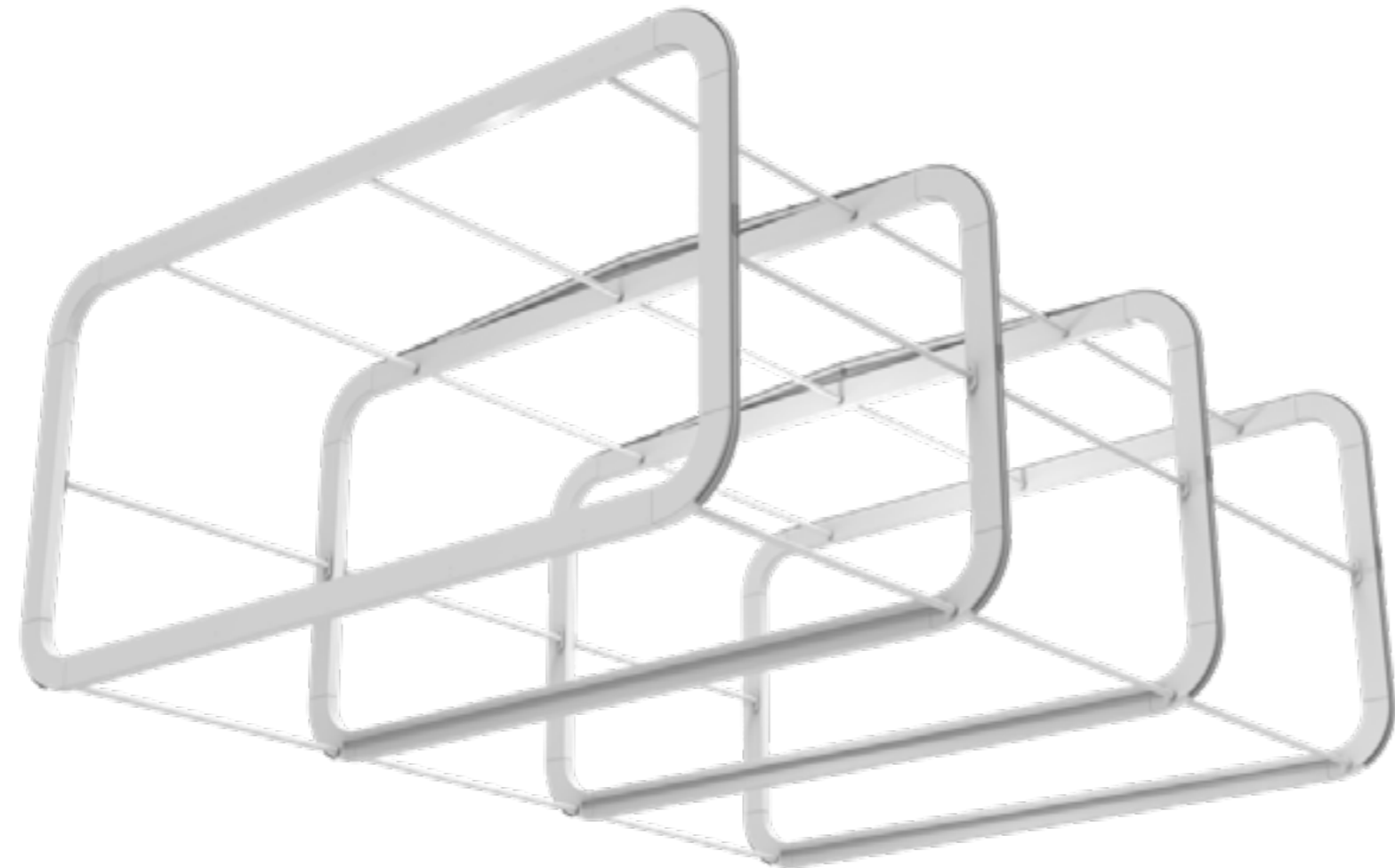
FEATURES



SPACE FRAME

Completely unique to the AirClad EXPRO system is the Space Frame's design and engineering. Comprised of a two-part aluminium section with internally-reinforced corners, the Space Frame is lightweight with superior structural qualities.

Customisable in a range of RAL colour coatings, overlay changes can be made to enhance your brand. The Space Frames click and slide together, providing fast and secure foundations for all EXPRO System Products.



PUCKS

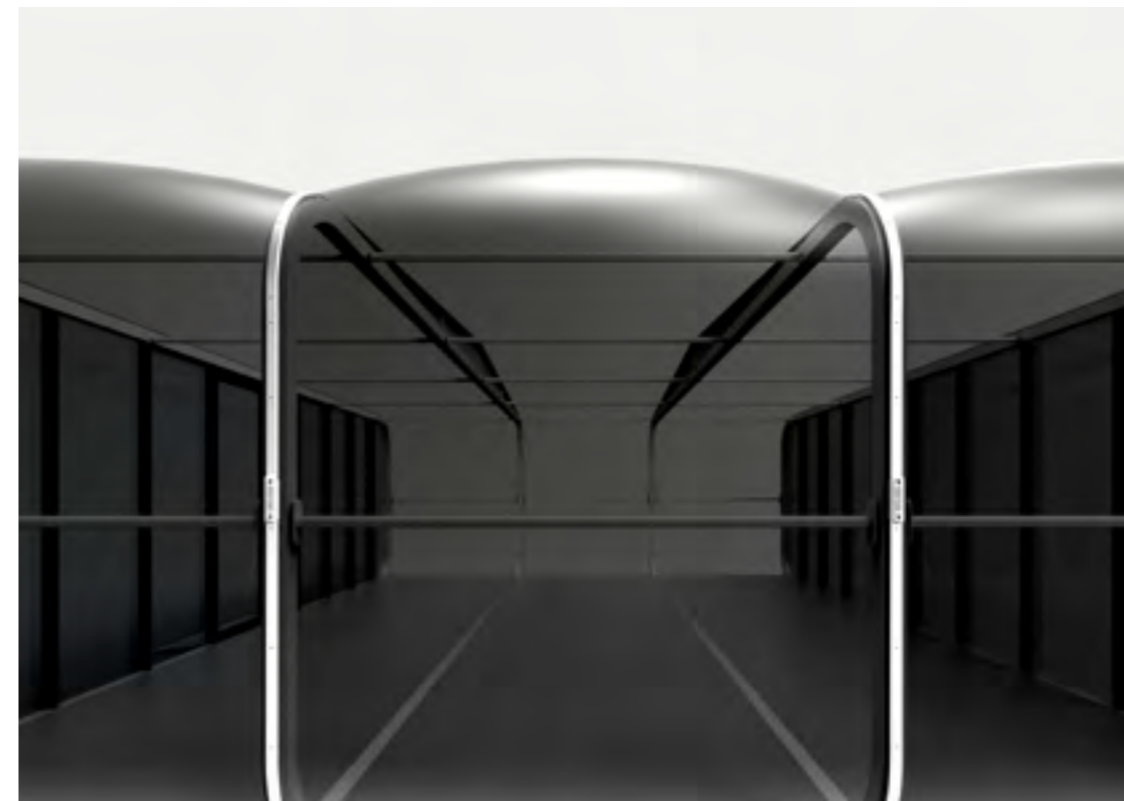
The Space Frames securely connect together using AirClad X Cross Braces which slide into our crafted Pucks which are mounted on the Space Frames.

Designed to transfer forces when the AirCells are pressurised, the Cross Braces can be used to support various accessories, including lighting, branding and AV equipment.

AIRCELLS

Pressurised air cladding is a core element of the AirClad EXPRO system. AirCells wrap around the Space Frames, locking into Keder extrusions. Once pressurised, the cladding creates a Monocoque structure.

The AirCells hug the shape of each frame and are typically made from polyester-reinforced PVC or glass-reinforced Silicon. Other substrates can be used in the system subject to performance requirements.



Nothing holds us down

Wave goodbye to ballast & tethering lines

Structure: XPO 10
Location: London Fields, UK
Client: Hotpod Yoga

FEATURES

[X]

Structure: XPO 6
Location: La Defense, Paris
Client: Audi

Enhancements:
Seamless rear fascia
branding



MAKING IT YOURS

The Personal Touch

At the heart of AirClad products is the capacity for full customisation. From signage and lighting, to full retail shoplift.

Bring your brand to Life.

As a design company at our core, we are able to respond to any brief and address any problem you need to solve. Our extensive experience of design, production and operations allows us to help you find an appropriate solution, be it with or without an AirClad.

All of our structures are designed to be permanently and temporary branded and our in house team can assist with templates and full art working as required.

MAKING IT YOURS



IT'S

A

WR

AP

GRAPHIC ENHANCEMENTS

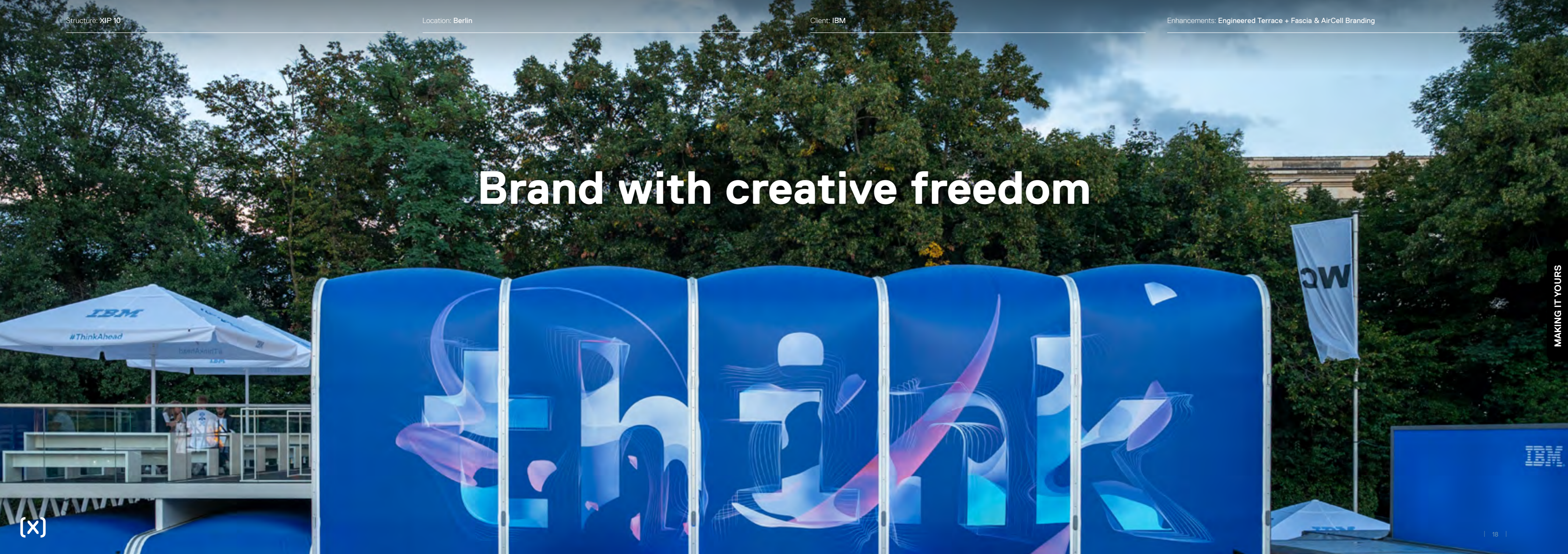
AirCells

Our AirCells can be fully branded in production to deliver striking results. The only limit is your imagination.

Acting as a black canvas for brands to express themselves, AirCells can be used attract passers by and engage your core audience.

From fully-printed artwork to temporary branding, the AirCells allows you to animate the structure and bring your unique vision to life.

Brand with creative freedom



MAKING IT YOURS





Blow
& behold

(x)

MAKING IT YOURS

Structure: XPO 6
Location: La Defense, Paris
Client: Audi

Enhancements:
Seamless rear fascia
branding



GRAPHIC ENHANCEMENTS

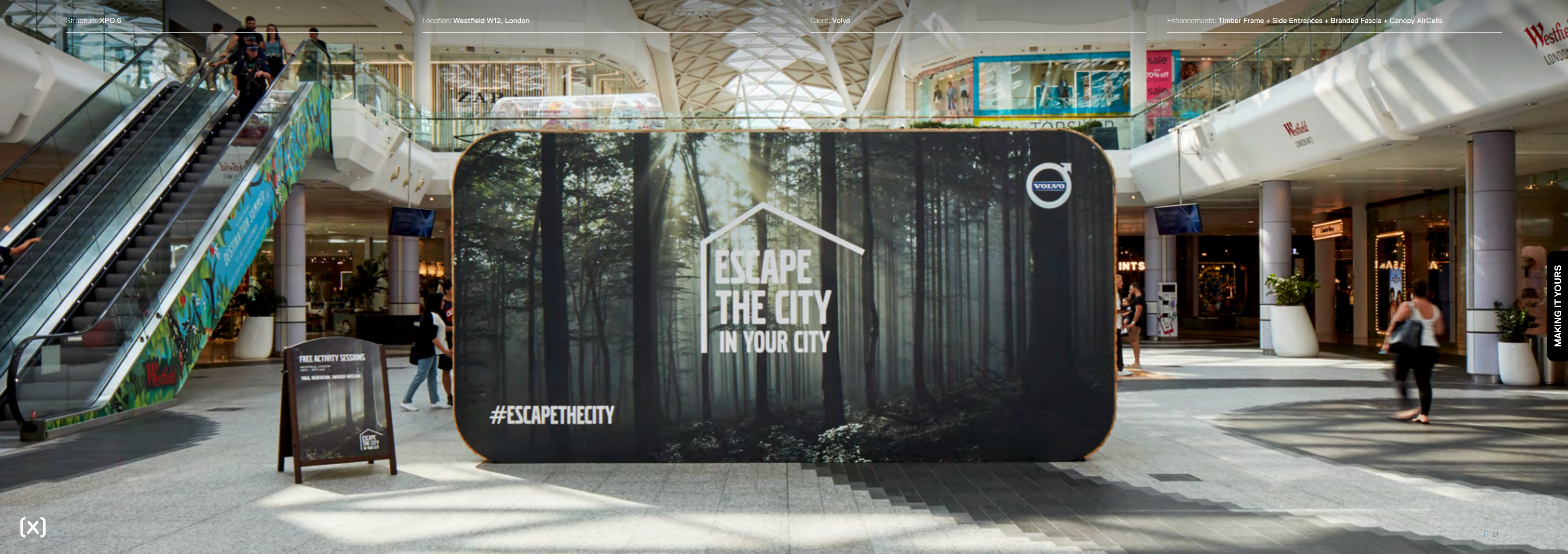
Fascias

Changing your appearance.

Front and rear fascias provide ample space for brands to effectively tell their story.

Stretching from floor ceiling, this expansive canvas gives brands the means to intrigue, attract and communicate with their audience.

What better way to speak to the world than with full colour graphics, unique to their own message.



FREE ACTIVITY SESSIONS
 VEGAN, MEDITERRANEAN, SWEDISH RESTAURANT
 #ESCAPETHECITY

MAKING IT YOURS

STRUCTURAL ENHANCEMENTS

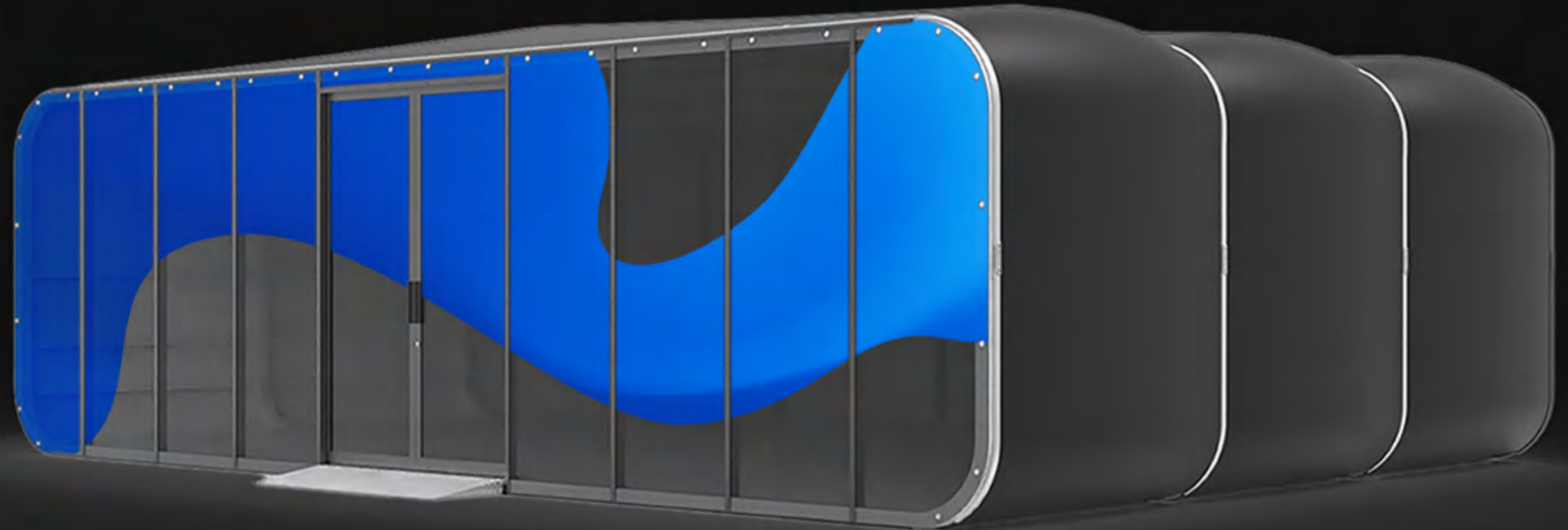
Fascia Options

The face lift.

We know that one size doesn't fit all, so we made the XPO range for brands to dramatically change its appearance.

Our different fascia options give the flexibility to enhance the experience depending on the intended use of the interior.

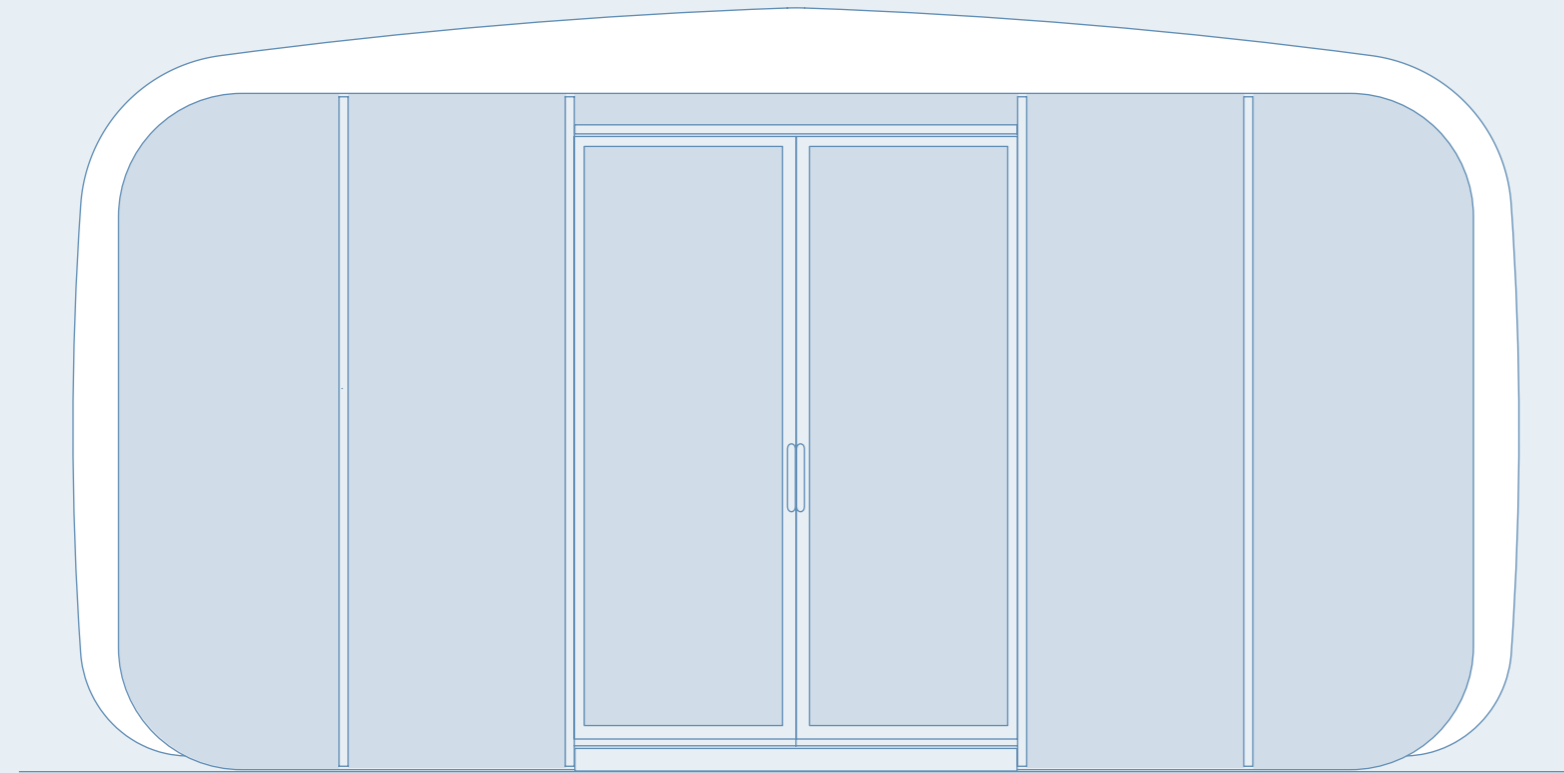
Whether it's a fully open fascia to create an airy indoor space, or a fully closed fascia with sliding doors for extra privacy, the XPO range has the flexibility to suit your event perfectly.



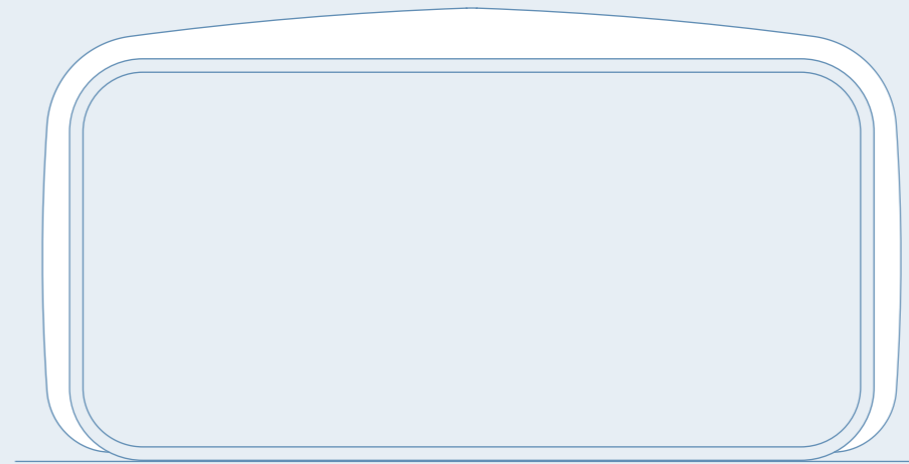
MAKING IT YOURS

XPO 6

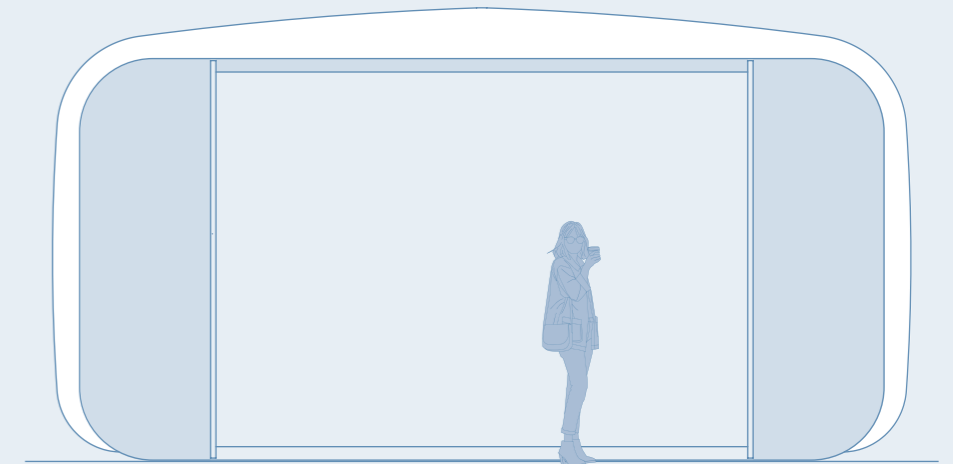
Fascia Options



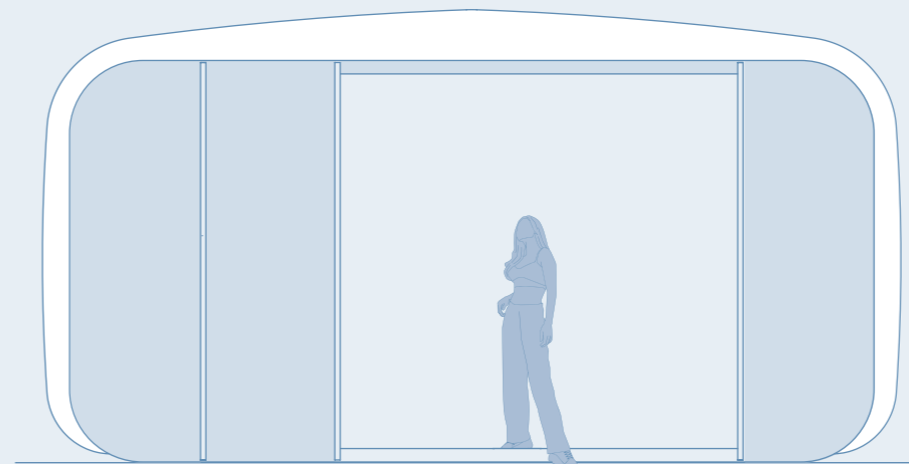
STANDARD



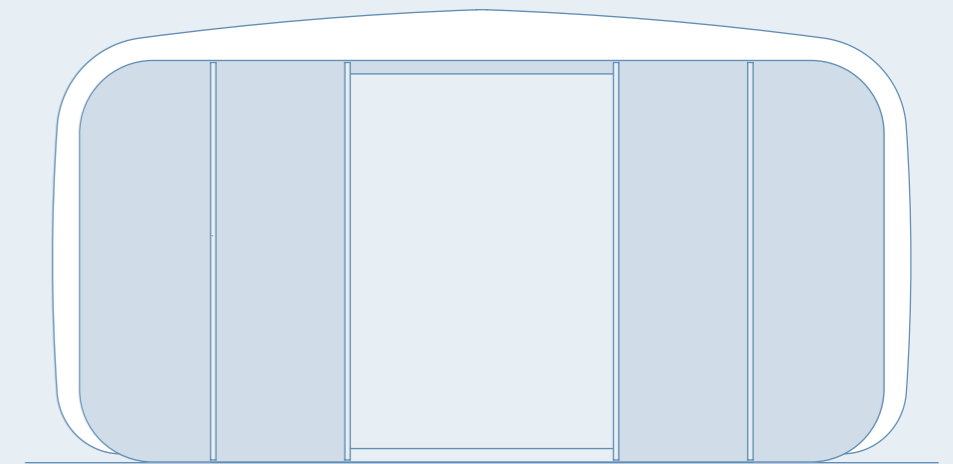
FULL OPEN



4M OPEN



3M OPEN



2M OPEN

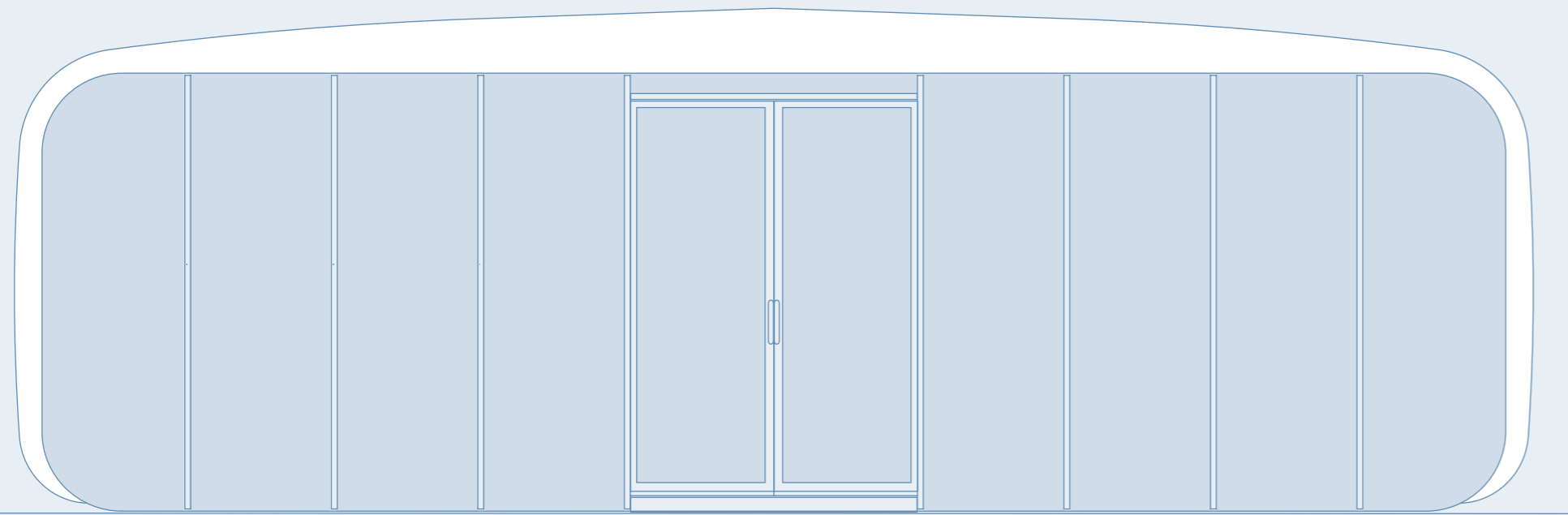


MAKING IT YOURS

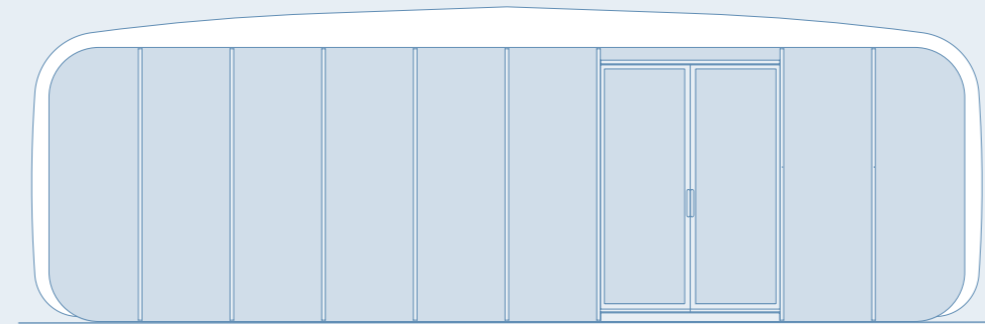


XPO 10

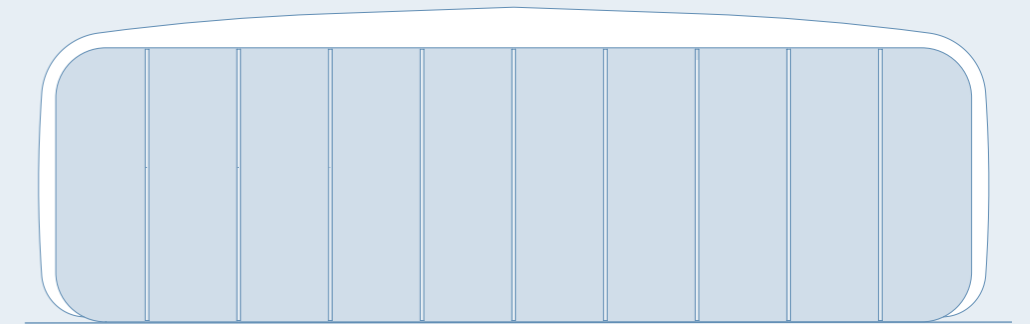
Fascia Options



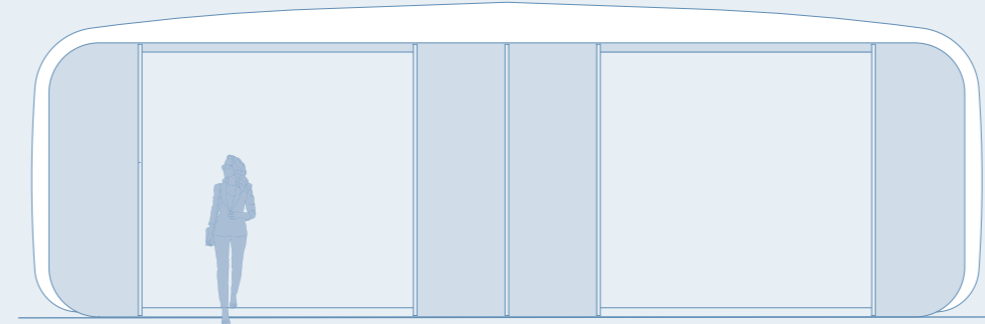
STANDARD



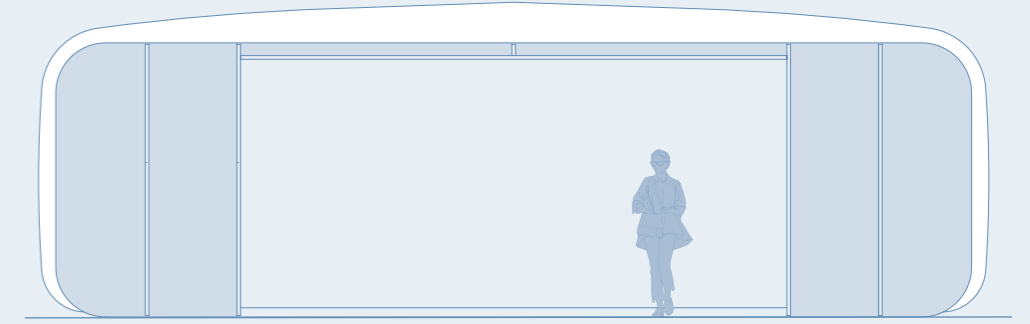
DOOR RIGHT (OR LEFT)



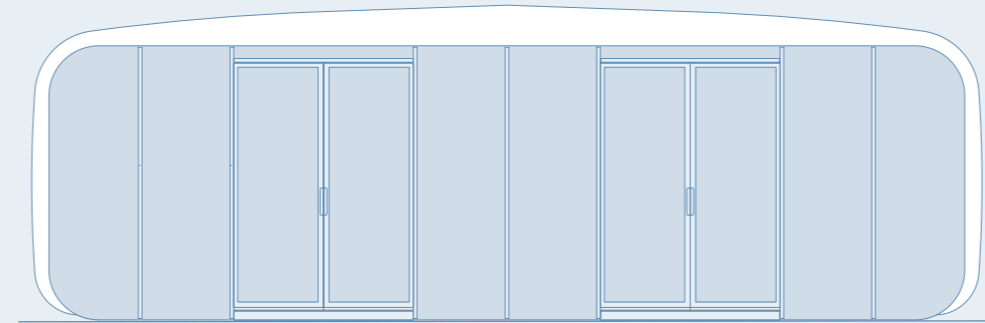
FULL CLOSED



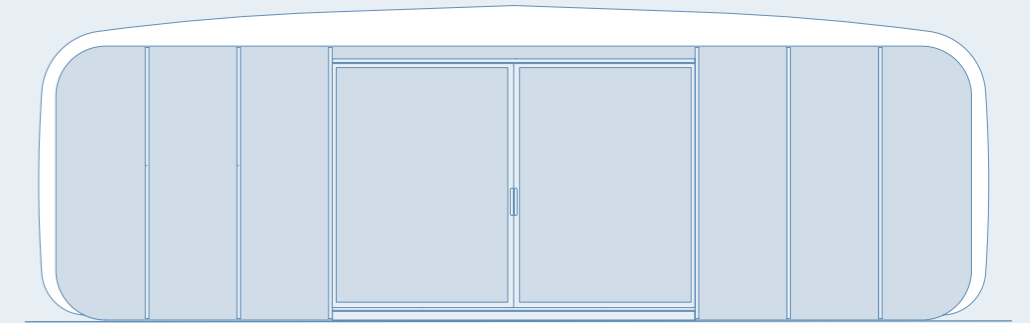
DOUBLE 3M OPEN



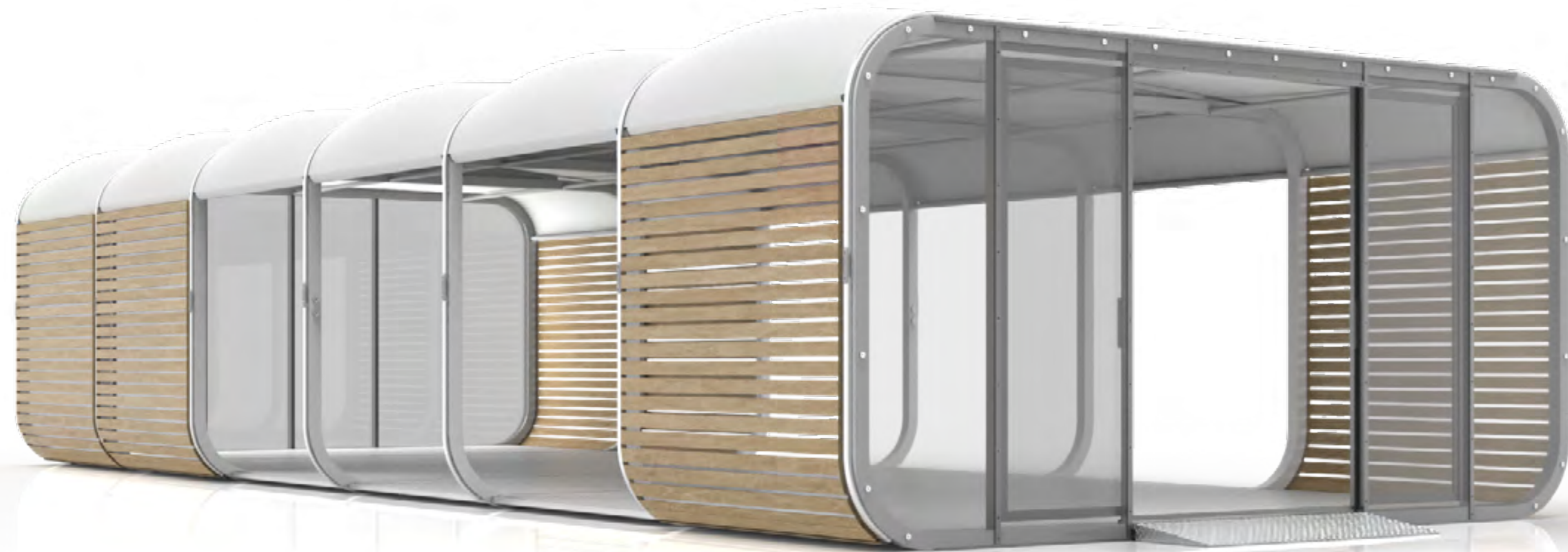
6M OPEN



DOUBLE DOOR SPLIT



DOUBLE DOOR



STRUCTURAL ENHANCEMENTS

The Side Effects

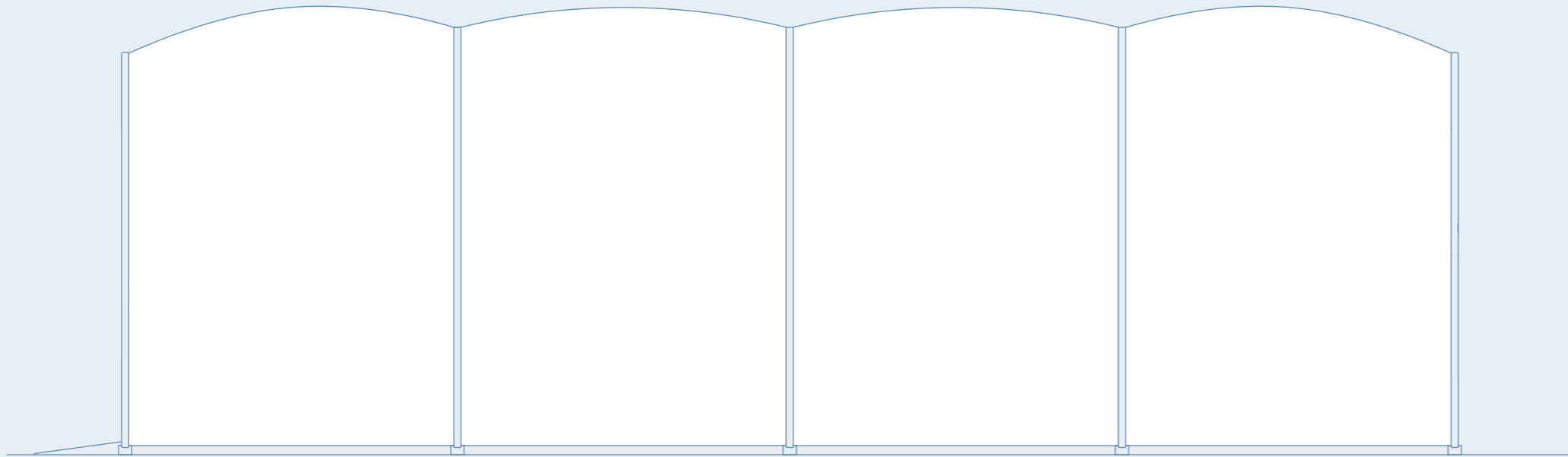
Express your personality with seamless all-round enhancements.

The sides of the XPO range provide as much flexibility as the fascias for brands to create something unique to them.

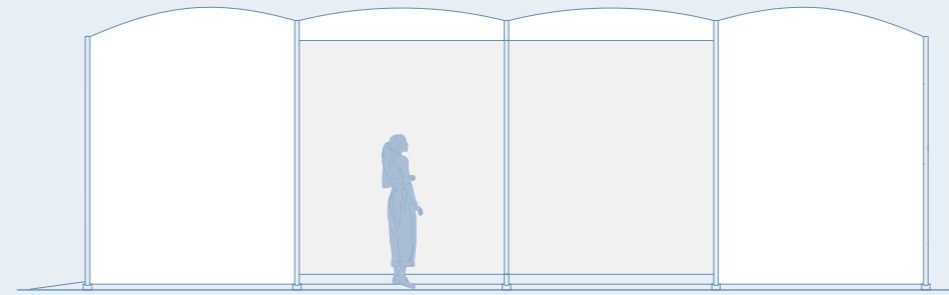
Whether you choose from our standard AirCell options, slatted wooden sides, integrated doors and windows or even no sides at all, our side effects are guaranteed to get you noticed.

XPO 6 + 10

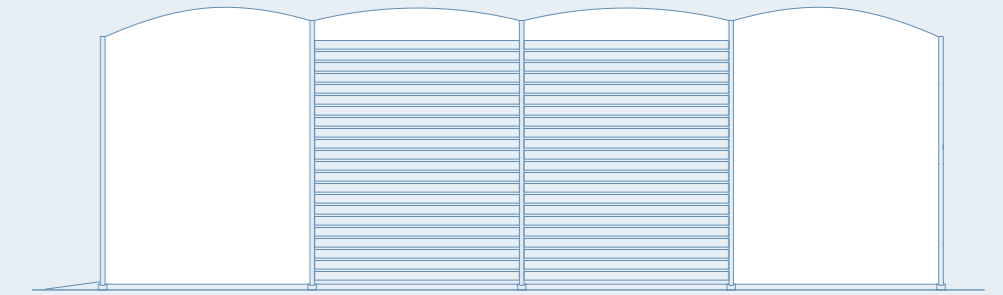
Side Options



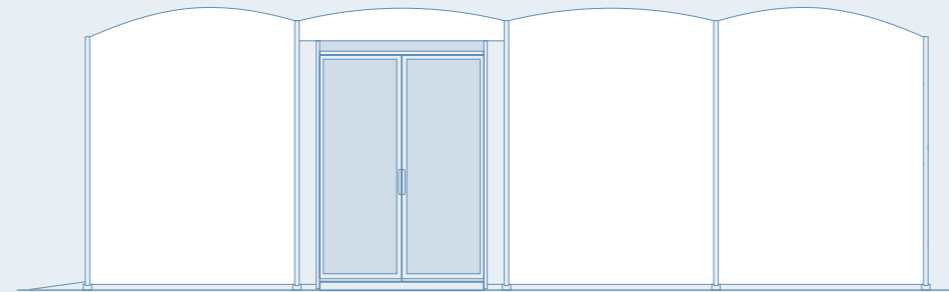
STANDARD



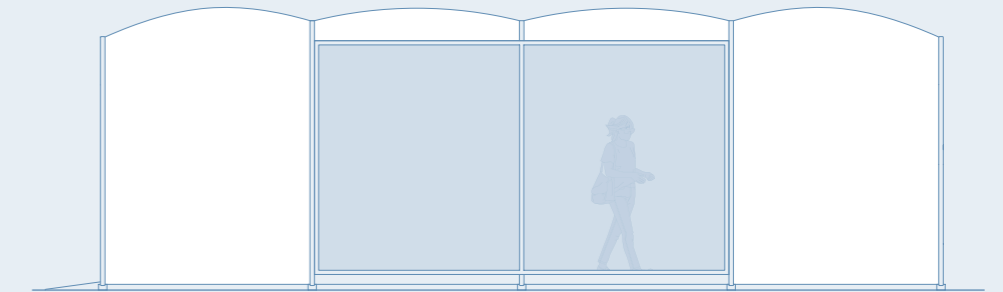
OPEN



SLATTED



DOOR



WINDOW



THE NEW VOLVO XC60

ACTIVITY
IN
SESSION

MAKING IT YOURS



Engineered harmony





MAKING IT YOURS

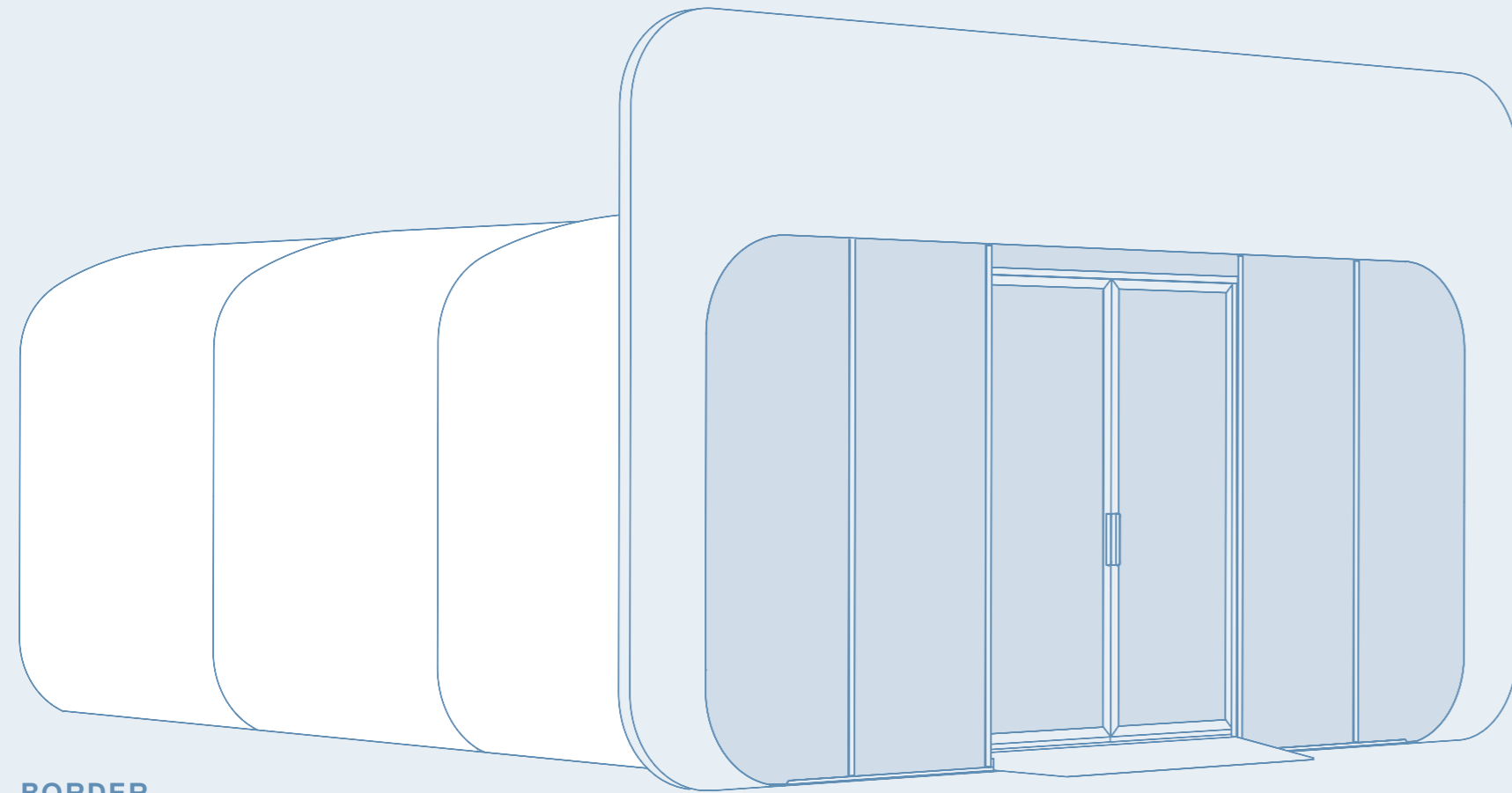




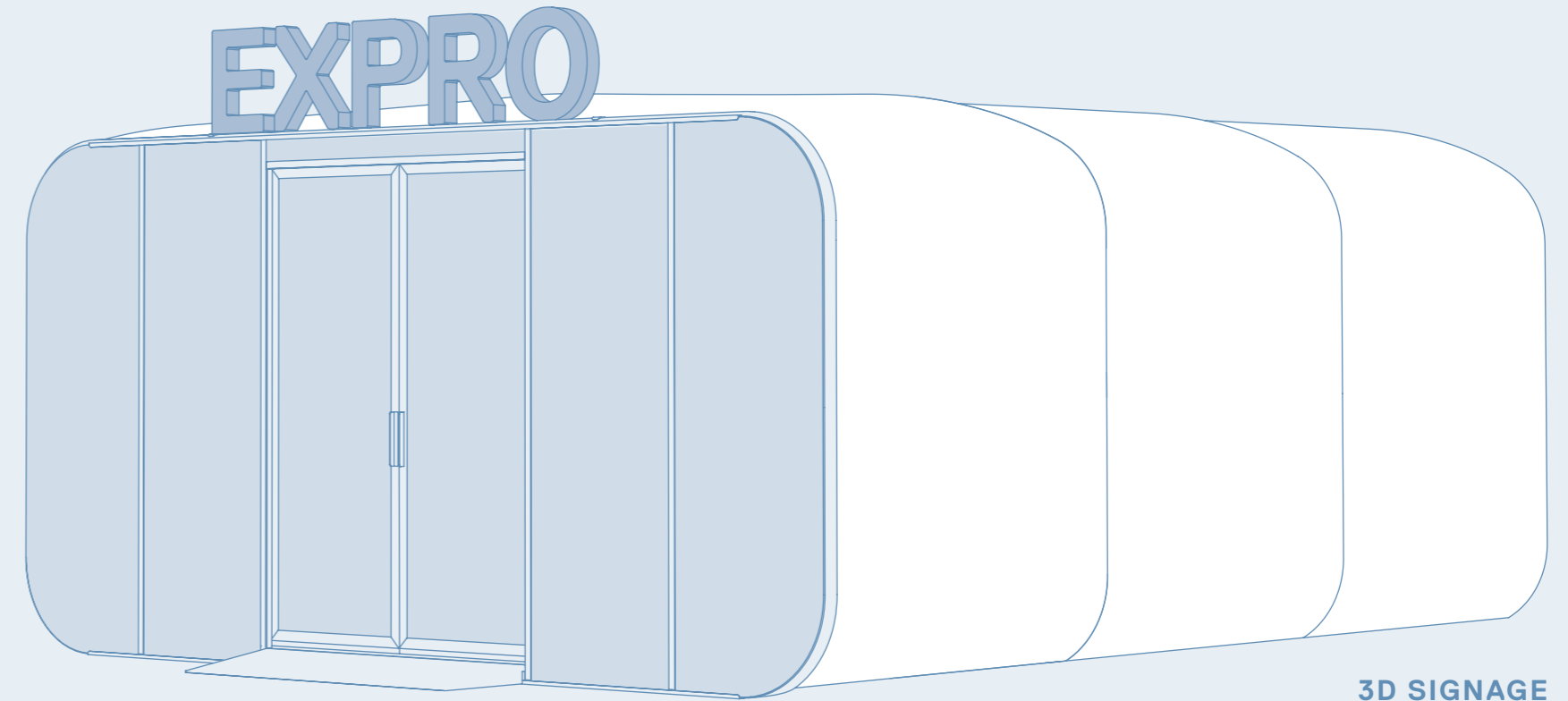
**Dressed up
& ready to go**

XPO 6 + 10

Additional Enhancements



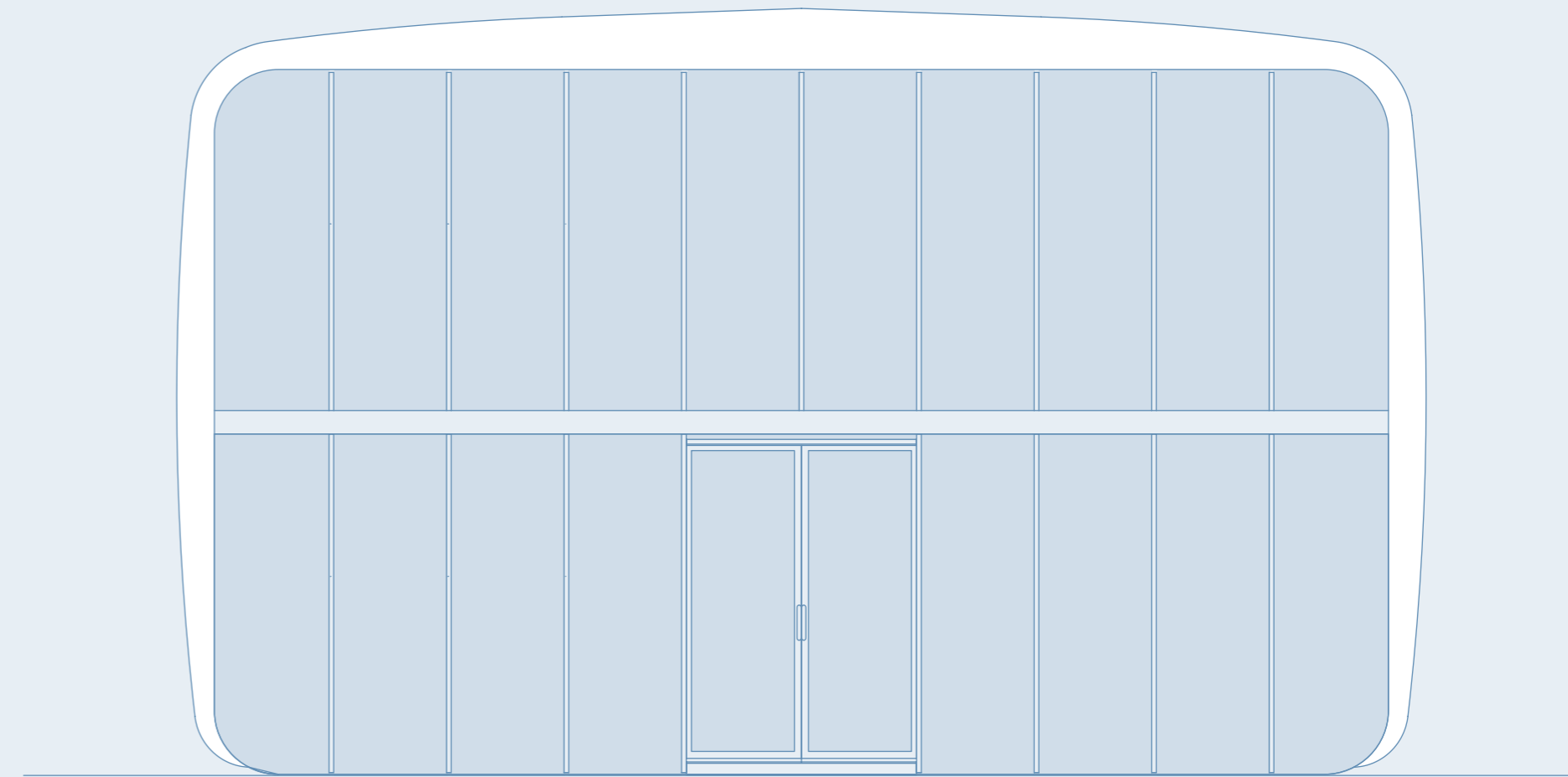
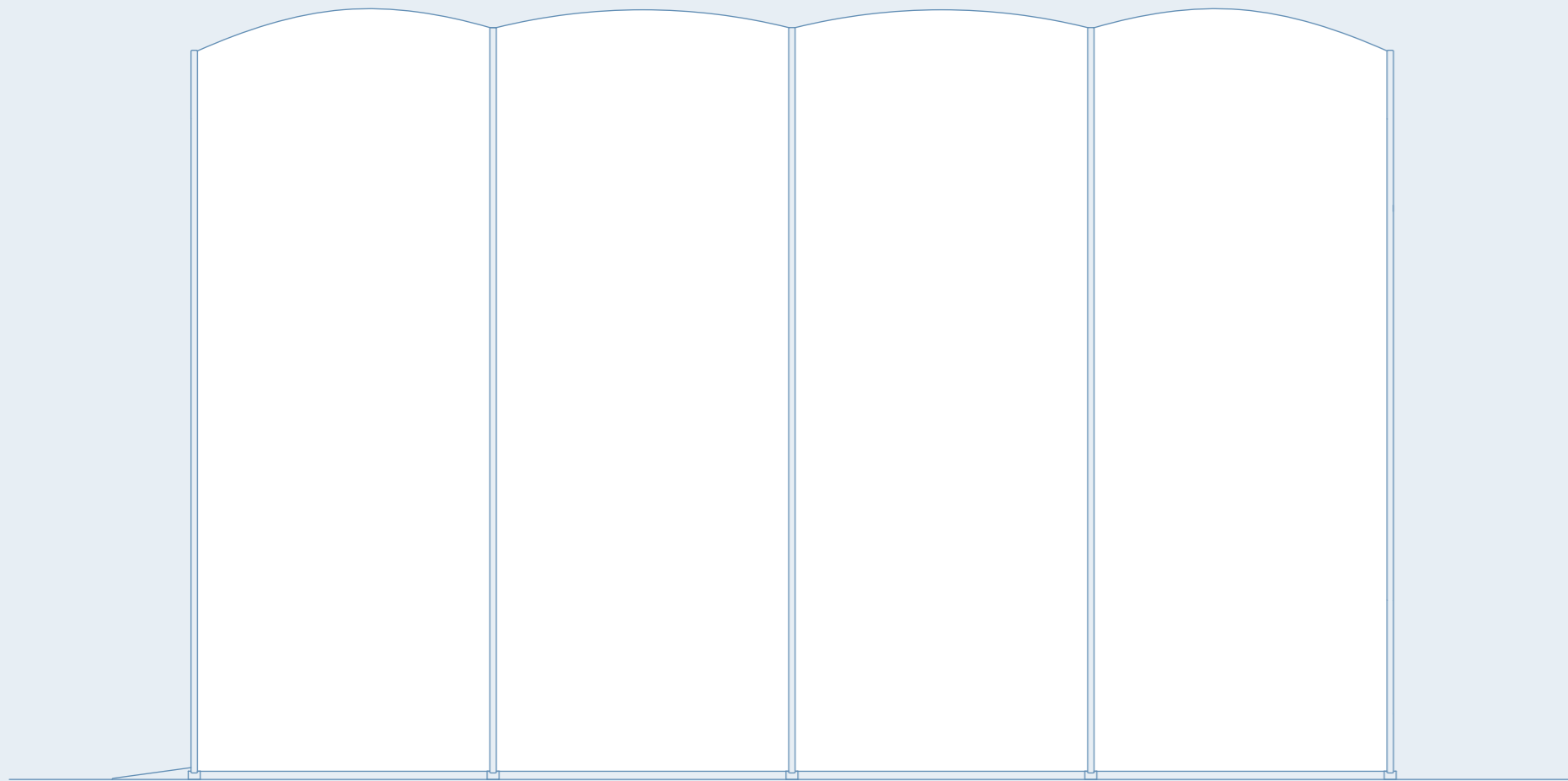
BORDER



3D SIGNAGE



Double up with the XPO 10DH





INTERIOR ENHANCEMENTS

XPLAY

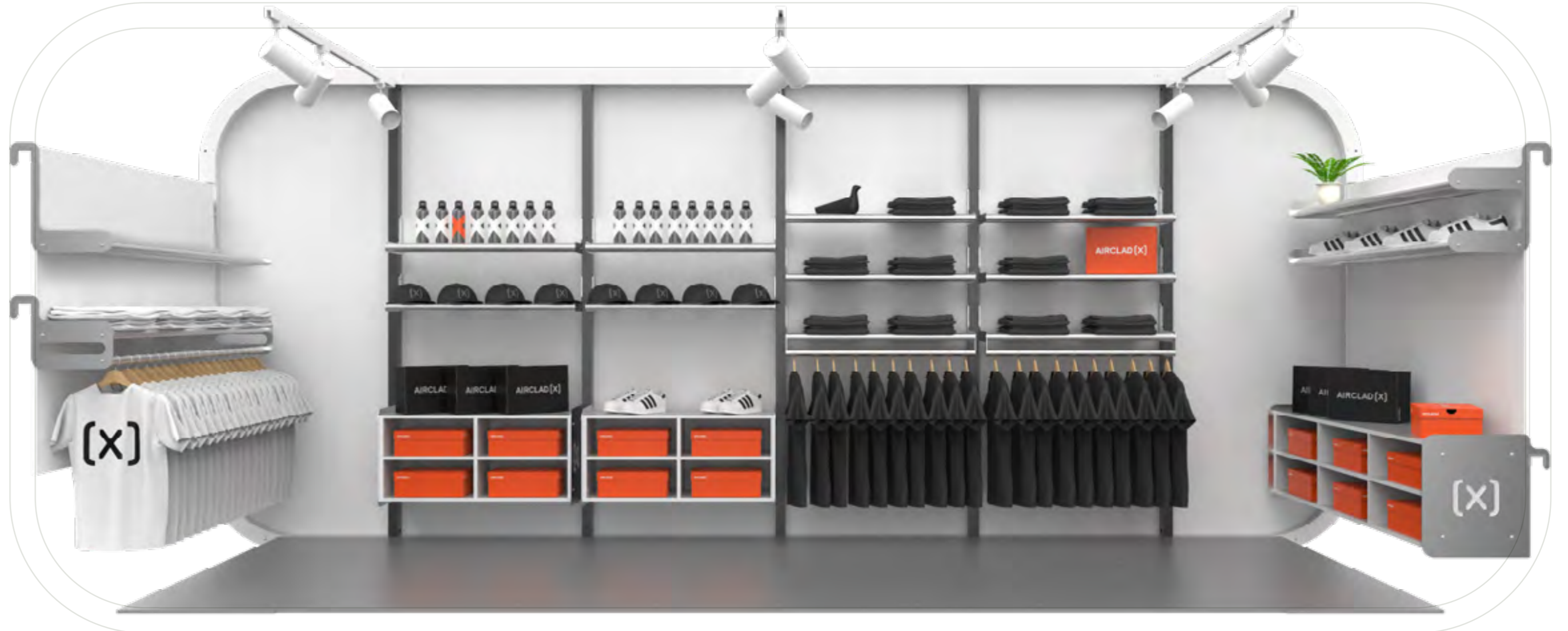
The future of event retail comes nicely packaged with the addition of XPLAY for EXPRO.

Our reusable, plug & play internal shoplift systems enables you to merchandise your brand.

Designed to efficiently use space for maximum return, specifically designed and engineered to seamlessly work with the XTRAIL. (Please note this offer differs in size from the Main XPLAY range for the EXPRO range from AirClad X.)

AirClad believes the future in events will be reflected in what we call #EventRetail.

We have been developing innovative products and systems for decades. Our shop-fitting systems for walls, central space frames and mid-floor areas provide a solution for every need and can be continually reconfigured with a wide range of merchandise supports.





INTERIOR





INTERIOR



Structure: XPO 6

Location: London

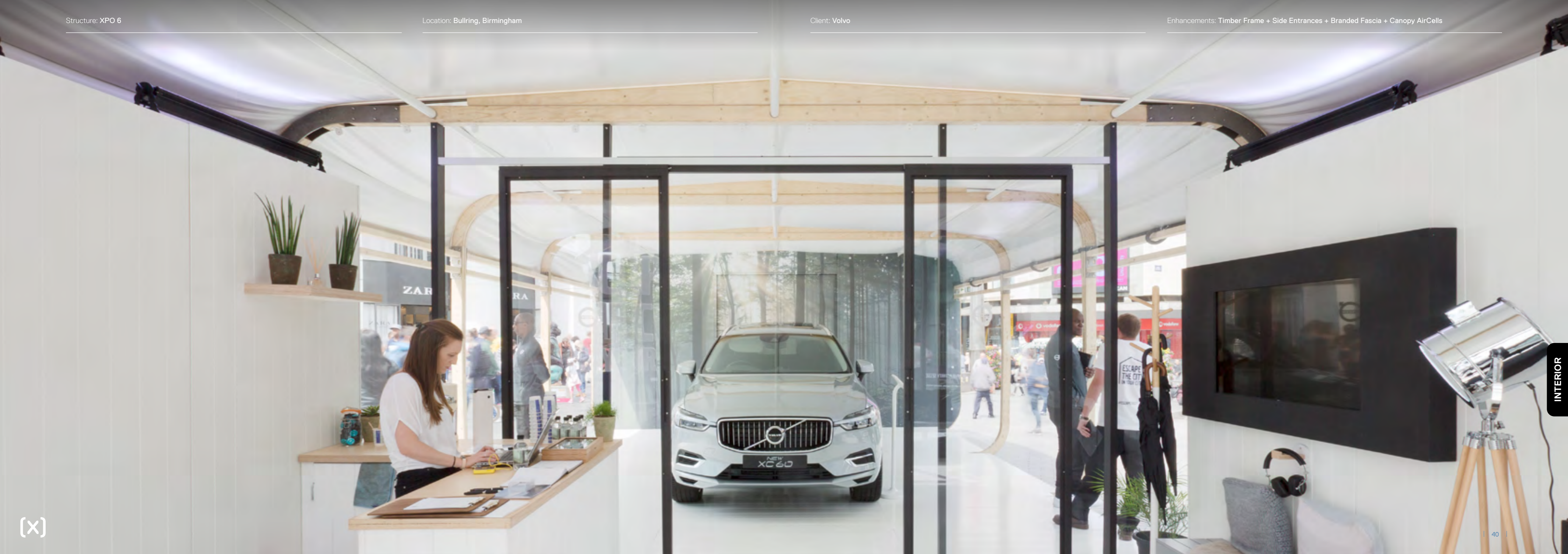


Client: Volvo

Enhancements: Timber Frame + Side Entrances + Branded Fascia + Canopy AirCells



INTERIOR



INTERIOR





INTERIOR



BUY

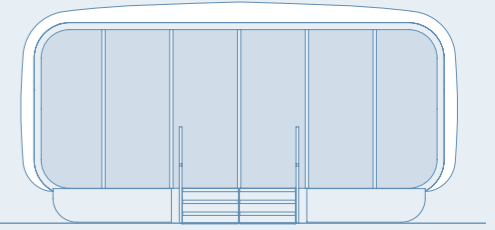
RENT

LEASE

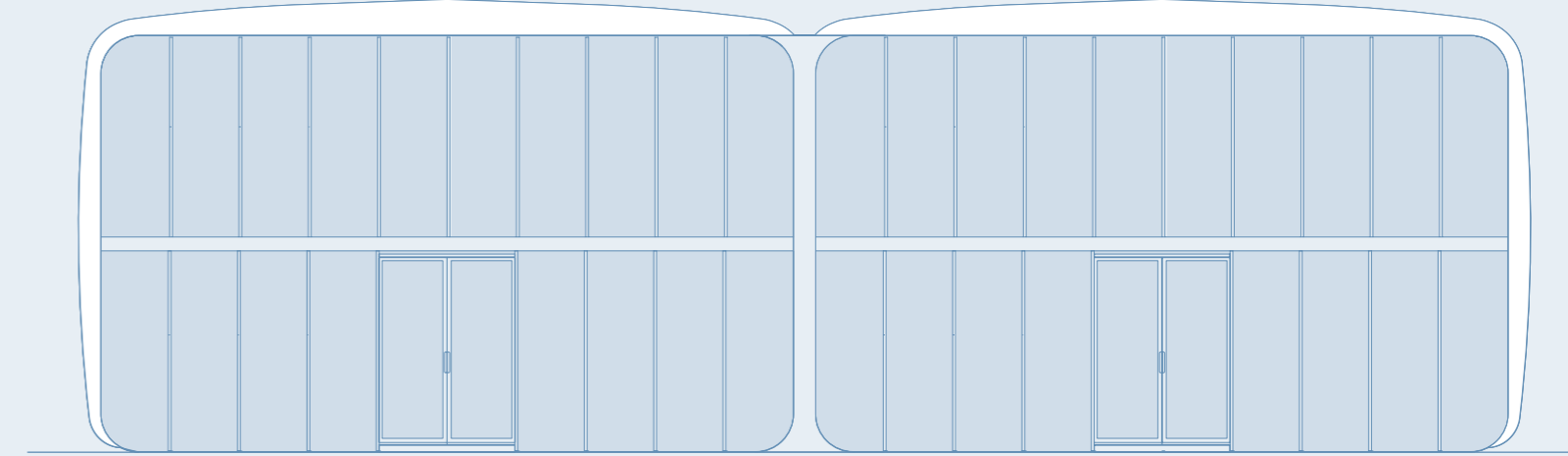
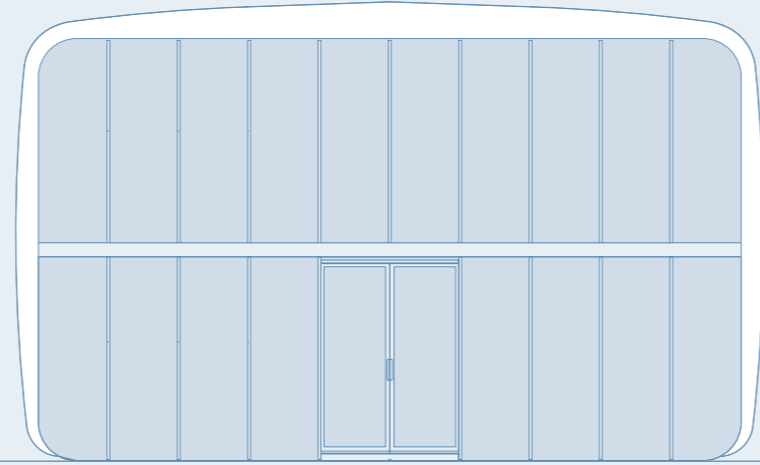
FRANCHISE

MEET THE FAMILY

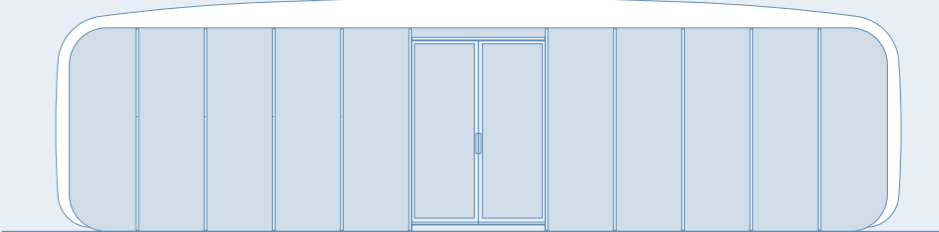
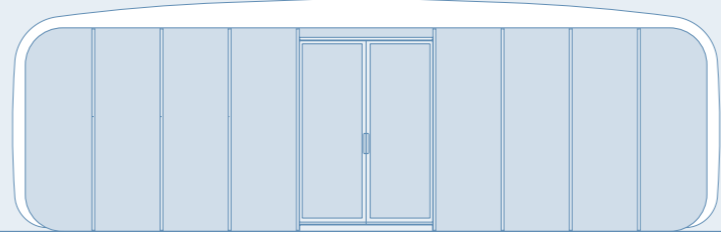
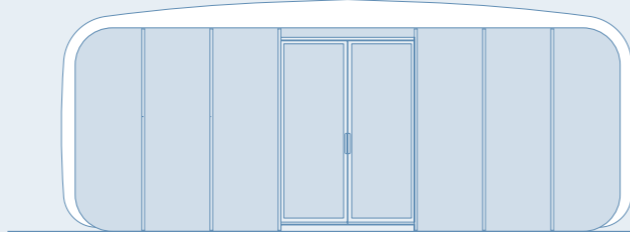
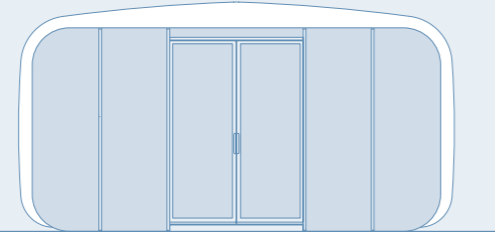
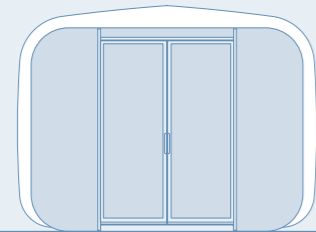
XTRL
6



XIP
10 / 20 / 10[M] / 20[M]



XPO
4 / 6 / 8 / 10 / 12



OUR MISSION

Eco Statement

Our products and systems have been developed with an eco-conscious approach since we started back in 1995.

Sustainability has become an increasingly large part of daily life and as our clients and partners become more aware of the damage that industry is doing to the local and global environment, we are working hard to demonstrate our commitment to sustainable change and searching for solutions together. We believe our business practises reflect a more eco-minded, future-facing approach that is better for all.

AirClad Products are designed for reuse, time and time again. We're proud to say that some of our oldest structures, those that started us on this journey, are still in everyday use over ten years after leaving the factory, with expectations to last way into the future. The modular nature of AirClad enables us to easily replace and refurbish parts, to achieve new aesthetics and minimise breakages. Extending the life of our structures helps us reduce our environmental footprint, yet still we aim to do more.



AIRCLAD

ANYWHERE

(x)

AIRCLAD (X)

AirClad Ltd
Essenstraat 5
2060
Antwerp
Belgium

info@airclad.com
www.airclad.com

AirClad Ltd
The Echo Building
18 Albert Road
Bournemouth
BH1 1BZ

+44 (0) 1202 942 475



"As a designer, I strive to encourage opportunities of chance, where creativity moves beyond appearance. For me there is joy in developing unique products that challenge convention, inspire and engage."

A white, handwritten signature on a dark background. The signature is stylized and appears to read 'Nick Crosbie'.

Founder
Nick Crosbie

SPACE FOR LIFE

Design by Inflate
All IP and design rights Te Koop Ltd